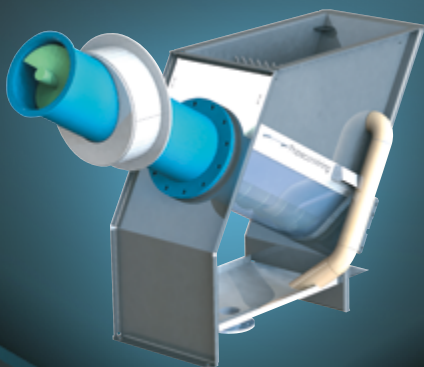
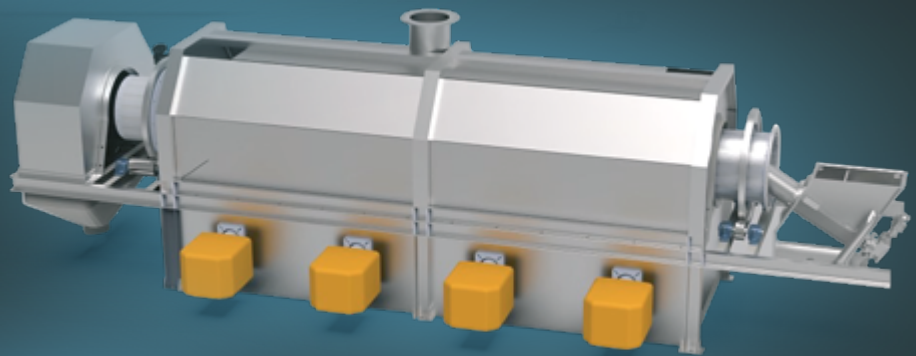
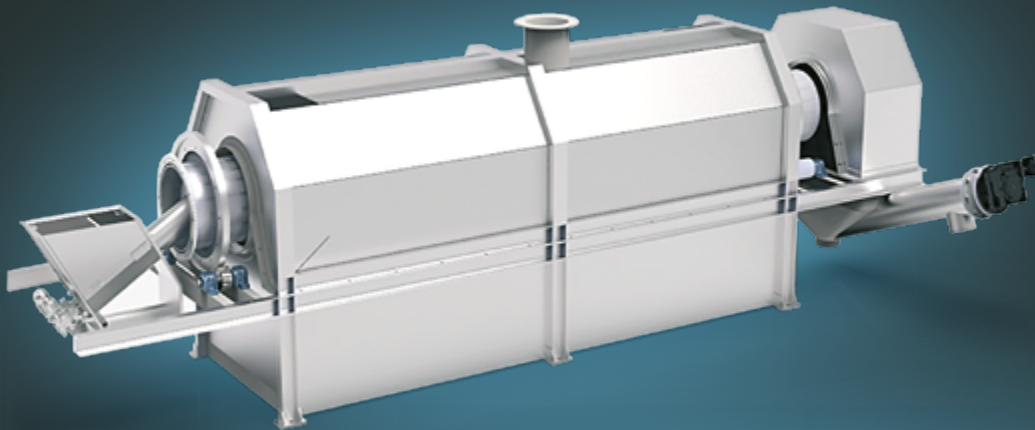




Phasecon Mining

A DIVISION OF PHM GLOBAL

ROTARY CARBON REGENERATION KILN



**GLOBAL
EXPERTISE
LOCAL
PASSION**

BBBEE LEVEL 2



+27 12 030 0320



sales@phaseconsa.co.za



Unit 2, Icon Industrial Park,
473 Barolong St, Sunderland Ridge,
Centurion, 0157, South Africa



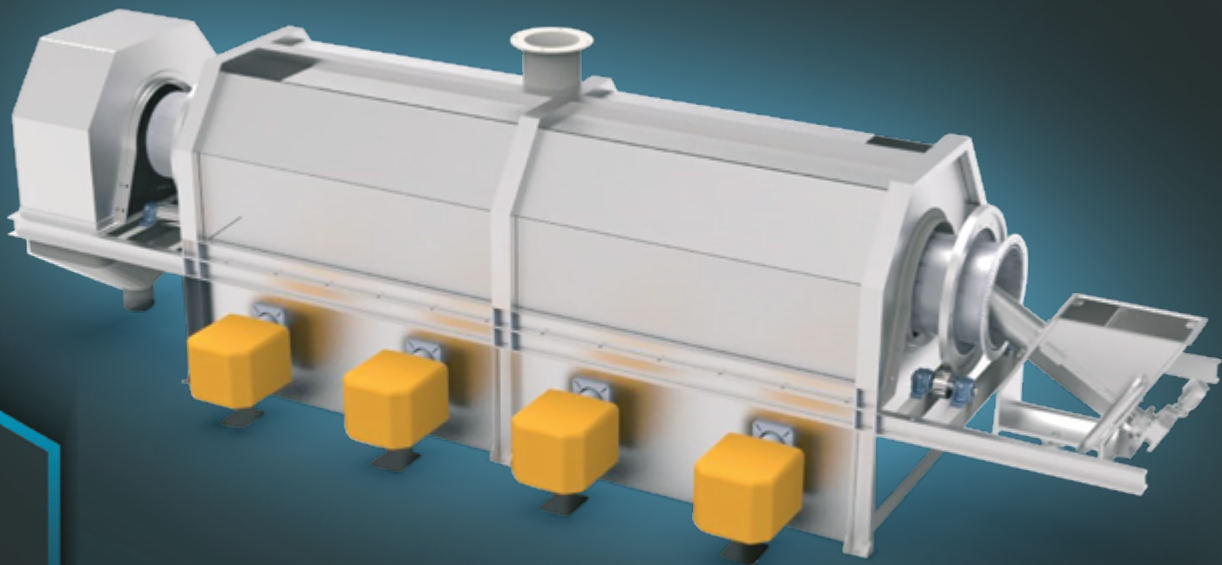
www.phaseconmining.co.za

PHASECON MINING IN THE FIELD OF KILN CONVERSIONS



At Phasecon Mining, we take pride in leveraging 42 years of experience to create custom sound design solutions that incorporate innovative technology.

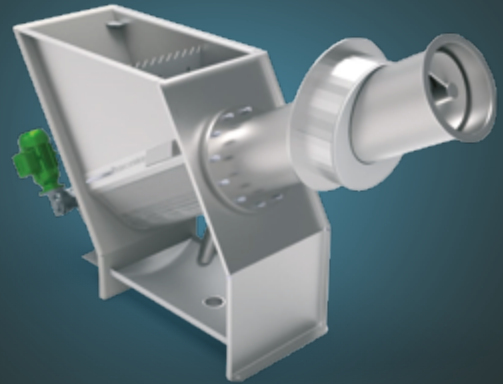
Our rotary carbon regeneration kilns are renowned in the industry, thanks to our unique heating control philosophies, robust and reliable power controllers, deep knowledge of the carbon regeneration process and our design solutions that effectively address factors contributing to poor regeneration.



PHASECON MINING ROTARY CARBON REGENERATION KILN SOLUTION OFFERS:

A Phasecon Mining Rotary Kiln design solution consists of the following:

- Refractory lined heating cabinet
- Modular drive assembly frame
- Indirect heating solution
- Retort Tube
- Refractory insulated modular discharge assembly frame
- Control panel solution



Refractory lined heating cabinet

Phasecon Mining Rotary Kilns cabinet is constructed from mild steel and is refractory lined to ensure heating efficiencies are maintained. The heating cabinet is corrosion protected through heat resistant paint.

Modular drive assembly frame

The Phasecon Mining Rotary Kiln's drive assembly houses the unique dewatering screw feeder hopper, which incorporates a distinct overflow and access water screening design, the AC and backup drive assemblies, as well as the anti-slip support roller assemblies with an alignment-adjustable interface design.

The modular frame is constructed from mild steel and protected against corrosion with heat-resistant paint.

Indirect heating solution

The Phasecon Mining Rotary Kilns are heated indirectly using a variety of heating sources. These include electric options such as SIC, Candle, and Stripper, as well as gas or fuel burners.



PHASECON MINING ROTARY CARBON REGENERATION KILN SOLUTION OFFERS:

Phasecon Mining has developed an **intelligent element control and monitoring system** that measures the element temperatures directly on certain predetermined elements which enables the system to protect the elements against over temperature conditions as well as to consistently measure the elements change in resistance during operation. The **amount of element life remaining** on the elements is then calculated and the client could choose to receive early notifications or **alerts from the system to schedule future replacements in advance** before the system heating performance comes into question.



SIC Elements as a heat source

- Silicon carbide (SIC) elements are designed to outlast normal strip and coil elements, providing the required power for a 5-year life cycle.

They offer several advantages:

- Higher heat transfer efficiency leads to **power savings of 20-30%**.
- Chemically manufactured to produce a selectable hot zone section on the element, allowing for ideal positioning to ensure **effective and efficient heat transfer** where it is needed in the process.
- Cold-formed element termination connections points ensure **superior heat dissipation** compared to conventional element lead-out cable connections found on strip, coil, and candle elements.
- Accessible through the side of the Kiln, making **maintenance and replacement easier**.



PHASECON MINING ROTARY CARBON REGENERATION KILN SOLUTION OFFERS:

Retort Tube

The retort tube in Phasecon Mining's Rotary Kilns is made of either 321 or 310 Stainless Steel. The drive sprockets and support riding rings are bolted onto the tube assembly.

Retort Tube Manufactured from 310 vs 321 Stainless Steel

Based on our clients' operational experience, retort tubes made from 310 stainless steel have been reported to be a superior material choice compared to the industry norm of 321 stainless steel.

The superior 310 Stainless Steel material offers the following benefits:

- Less deformation compared to 310 s/s material.
- Takes longer to develop creep stress.
- Five times more capacity to withstand rupture due to creep stress.
- 20% higher continuous operating temperature exposure acceptance.
- High Chromium & Nickel content ensures improved resistance to oxidation and corrosion, suitable for applications in reducing Sulphur atmospheres containing H₂S.



PHASECON MINING ROTARY CARBON REGENERATION KILN SOLUTION OFFERS:

Refractory Insulated Modular Discharge Assembly Frame

The discharge assembly in Phasecon Mining's Rotary Kilns is modular and includes a stainless steel discharge chute with a replaceable wear plate. It also features a refractory insulated outer casing made from mild steel plate, protected against corrosion with heat-resistant paint, and anti-slip support roller assemblies with an alignment-adjustable interface design.



PHASECON MINING ROTARY CARBON REGENERATION KILN SOLUTION OFFERS:

Control Panel Solution

The control panel solution for Phasecon Mining's Rotary Kilns includes:

- PLC & HMI Control system with remote monitoring & control capabilities.
- Battery backup options: Sealed Lead Acid / Lithium Iron Phosphate (LiFePO4) batteries.
- Power controller drives by Phasecon Mining for controlling silicon carbide elements.
- Variable speed drives with motor protection for the screw feeder and main drive.
- Emergency DC drive with hardwire interlocks.
- Latest element protection control technology by Phasecon Mining, featuring continuous individual element zone feedback, monitoring, and PID control for element protection and control limits to prolong element life.
- Control panels come with a 12-month service agreement free of charge, along with a standalone remote monitoring network that connects to licensed mobile phone devices for live remote system monitoring & control.
- Temperature & alarm recording on PLC.



PHASECON MINING ROTARY CARBON REGENERATION KILN SOLUTION OFFERS:

TYPICAL HMI SCREEN LAYOUTS AND ELEMENT MONITORING PAGES

PhaseconMining 2/22/2022 9:12:26 AM HEALTHY POWER INFO

INCOMER POWER METER

L1-L2	L1-L3	L2-L3
VOLTAGE: 507	507	517
L1	L2	L3
CURRENT: 1034	1172	1234
POWER	POWER FACTOR	FREQUENCY
907664	1	50
ENERGY		
439221.000		

ZONE CURRENT TRANSFORMERS

	L1	L2	L3
ELEMENTS 1:	241	239	517
	L1	L2	L3
ELEMENTS 2:	257	255	257
	L1	L2	L3
ELEMENTS 3:	249	247	253
	L1	L2	L3
ELEMENTS 4:	215	215	166
	L1	L2	L3
ELEMENTS 5:	263	144	318

HOME

PhaseconMining 2/22/2022 9:11:19 AM HEALTHY ELEMENT TEMP

	ZONE CURRENT INITIAL			ZONE CURRENT RUNNING STORED		
	L1	L2	L3	L1	L2	L3
ELEMENTS 1:	244	242	240	241	239	238
ELEMENTS 2:	257	257	256	256	255	257
ELEMENTS 3:	266	267	270	247	245	250
ELEMENTS 4:	269	268	270	215	215	164
ELEMENTS 5:	262	262	316	261	142	316

	ZONE CURRENT PERCENTAGE			ZONE CURRENT UNBALANCE PERCENTAGE		
	L1	L2	L3			
ELEMENTS 1:	99	99	99	1		
ELEMENTS 2:	100	99	100	1		
ELEMENTS 3:	93	92	93	2		
ELEMENTS 4:	80	80	61	6		
ELEMENTS 5:	100	54	121	121		

ELEMENT TEMPS HOME

PhaseconMining 2/22/2022 9:11:25 AM HEALTHY TEMP INFO

	ZONE ELEMENT TEMPERATURE ANALOG		ZONE ELEMENT TEMPERATURE NETWORK		
	L1	L3		L2	
ELEMENTS 1:	1057	1080		1069	
ELEMENTS 2:	1097	1134		1130	
ELEMENTS 3:	1015	1080		1096	
ELEMENTS 4:	1026	1200		1012	
ELEMENTS 5:	1134	959		870	

TREND ELEMENTS 5 ELEMENTS HOME

TREND ELEMENTS 1 TREND ELEMENTS 2 TREND ELEMENTS 3 TREND ELEMENTS 4

PhaseconMining 2/22/2022 9:11:25 AM HEALTHY HOME

ELEMENTS ON

	ZONE 1	ZONE 2	ZONE 3
	PV TEMPERATURE	PV TEMPERATURE	PV TEMPERATURE
	722	729	746
	SP. SET POINT	SP. SET POINT	SP. SET POINT
	750	750	750

ELEMENTS ON

HOPPER TEMP 351

TREND ELEMENTS 5 STARTUP SHUTDOWN

DISPLAY INDEX MODES ALARMS CONTACT INFO

CONTACT US



Unit 2, Icon Industrial Park, 473 Barolong Street, Sunderland Ridge, Centurion, 0157, South Africa

+27 12 030 0320

sales@phaseconsa.co.za

www.phaseconmining.co.za